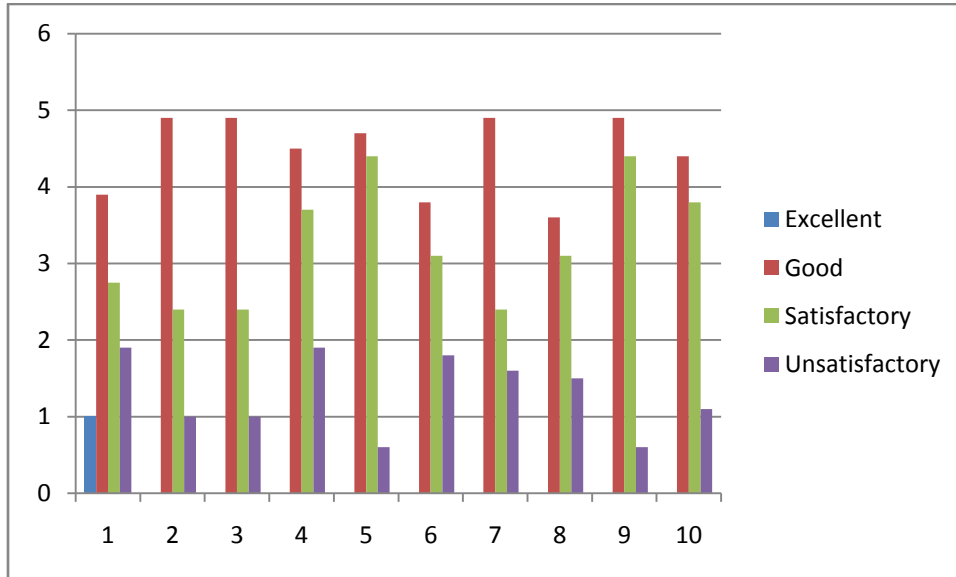


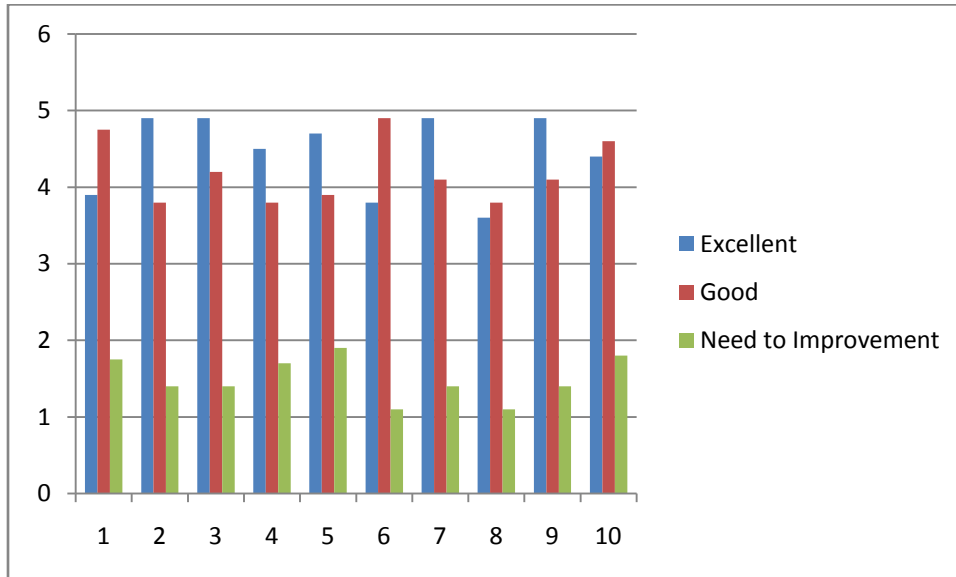
**Shri Jain Teachers' Training College ,Alwar**  
**Student Appraisal of Teacher**  
**Session 2019-20**



**Feedback Questions :**

1. Preparation for the class.
2. Punctuality in conducting classes.
3. Planning and completion of the syllabus on time.
4. Clarity of expression like language and voice.
5. Clarity of presentation (ideas, concepts, explanation)
6. Methodology used to impart the knowledge (use of blackboard, charts, teaching aids )
7. Active learn methodology used like-Group Discussion, Tutorials, Assignments and Seminars, Filed Visit Quiz.
8. Availability to student outside class hours for clarification, Counselling Career Guidance.
9. His/ her role as Leader/ Mentor/ Guide / Facilitator / Counselor.
10. The Examination / Assignment were graded fairly.

**Shri Jain Teachers' Training College ,Alwar**  
**Stake Holder Feed Back**  
**Session 2019-20**



**Feedback Questions :**

1. Curriculum and its transaction
2. Micro Teaching
3. Communication Skills
4. Teaching Practice
5. Extracurricular and extended activities
6. Community living camp and excursion
7. Facilities
8. Support System
9. Enrichment Programs
10. Institutional Tradition